



ONLINE

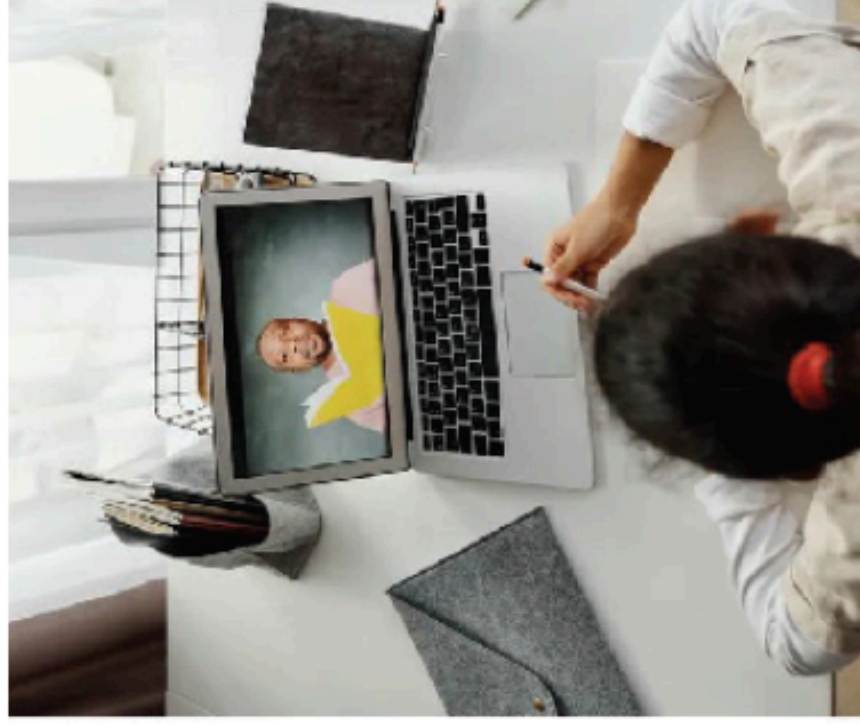
PAIRING AND RAPPORT BUILDING WITH STUDENTS

-
- August 24th - 1:00-2:30 p.m.
- **OR**
- August 25th - 10:00-11:30 a.m.
-

Learn strategies and the science of positive pairing with students to develop the relationships needed for learner and teacher success! These skills are even more essential during the Covid-19 epidemic when generating student 'buy-in' is even more challenging and some, or all, teaching is done over a screen.

Have you found yourself wondering why a student seems to do the opposite of what is expected or refuses to engage in classroom activities? How can you engage students who exhibit limited desires? Positive pairing is the foundation of building the rapport needed to make meaningful change. In this unit, we will explore how to use behavior to work more effectively with challenging students from elementary through high school.

To learn more, contact: Rose M. Cutting, CESA 3 WSPEI
rcutting@cesa3.org



90-minute presentation
\$75/per participant